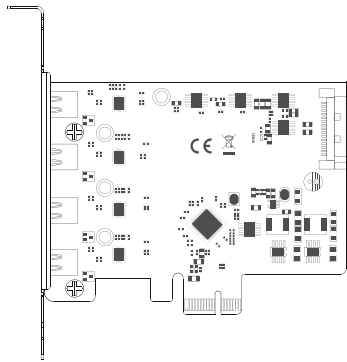




User Manual



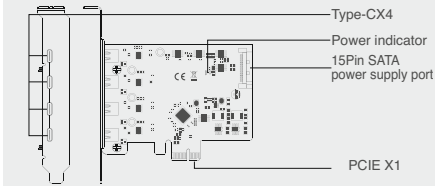
PCIe x1 to USB 3.2 Gen1 Card (4 * Type C Ports)

ER3106

Introduction

Product name:

EIRA ER3106 PCIe1 to 4-port Type-C GEN1 interface extension card

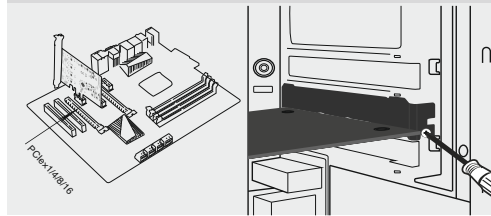


Item name:	PCIe1 to 4-port Type-C GEN1 interface extension card
Support:	Mobile hard disk drive
Interface:	PCIe X1 is compatible with x4/x8/ X16 card slots
Connector:	Type - C GEN1 5Gbps bandwidth
power supplys:	PCIe interface +15Pin SATA dual power supply interface
Size:	116(L)*120(W)*18.6(H) MM
System:	Windows7/8/10/11/Linux

Quick Installation Guide

Installation

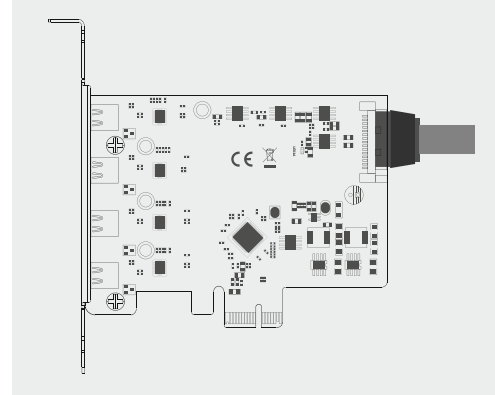
1. Insert express card to PCIe1/4/8/16 slot on motherboard;
2. Fix full profile bracket with lower panel of PC.



Quick Installation Guide

Installation

3. Connect 15pin SATA power cable with motherboard and



①

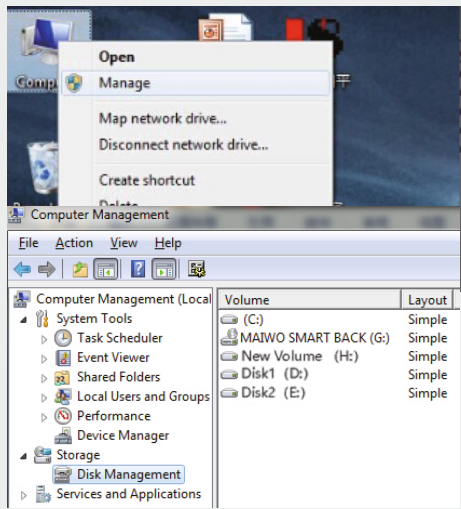
②

③

Note: Initialize the partitioned hard disk step when the USB interface is connected to the new removable hard disk

New hard disk format:

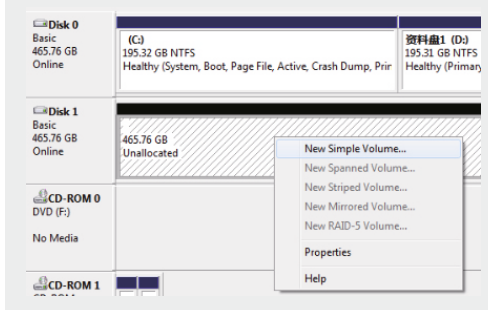
1. View "computer - Manage - disk management" to Find the new disk .



④

New hard disk format:

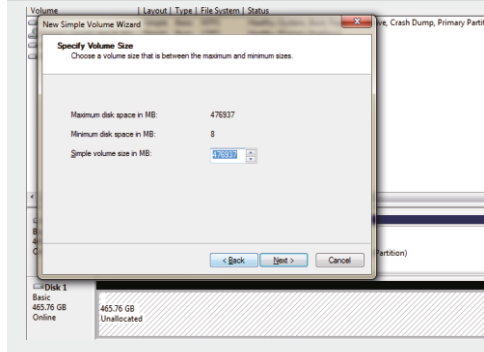
2. Right click the "External disk" , then click "New Simple Volume".



⑤

Hard disk Partition:

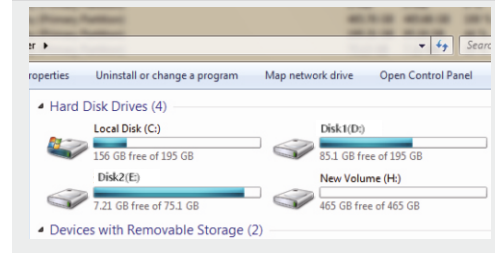
3. According to the instruction, choose the size of partition, then click "Next" to finish.



⑥

Hard disk Partition:

4. Then you can find the new hard disk in the "Computer", it's ready to be use.



initialization, partition and format

1.1 View "computer - Manage - disk management" to find the new disk .

Remark: There two types MBR and GPT. SSD capacity <=2T, please choose MBR, if more than 2T, choose GPT.

2.2 Right click the "Disk 1", then click "New Simple Volume".

⑦